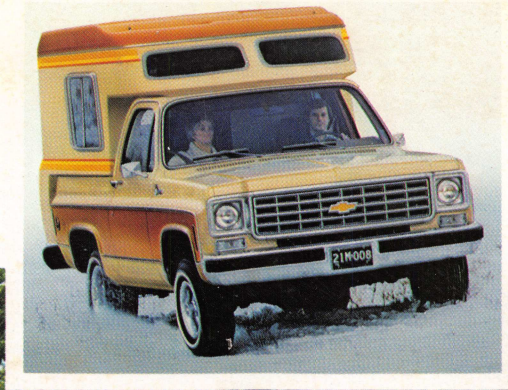


BLAZER CHALET

**NOW AVAILABLE FROM
YOUR CHEVROLET DEALER—
THE BLAZER YOU CAN LIVE IN.**



CHEVY TRUCKS

YOUR MONEY'S WORTH. MILE AFTER MILE AFTER MILE.

BLAZER CHALET BY DAY.



Blazer Chalet combines the toughness of a four-wheel-drive Chevy Blazer with all the advantages of a complete camper unit.

The camper has a fiberglass reinforced plastic body over a steel frame and is mounted permanently on the Blazer. Camper and Blazer are bolted together, steel-to-steel, for strength. A unique rubber seal between the camper and Blazer's steel half top flexes to allow for normal sway and to keep out air and moisture.

Inside, Blazer Chalet is a spacious and comfortable place to live. The camper top pops up easily to provide more than six feet of headroom. The unit is fully integrated, too, so you can walk from the cab directly back to the living quarters.

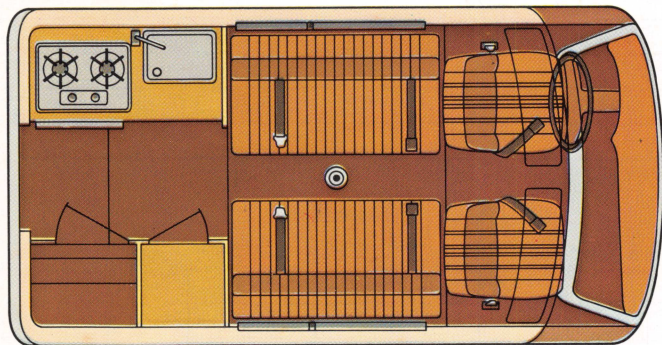
Blazer Chalet is available in four versions: Base Package and Packages A, B and C.

Base Package. Convertible seat/bunks can provide seating for four

adults and sleeping accommodations for two. A demountable dinette table with ample leg room fits between the seats. Seats are upholstered in saddle vinyl to co-ordinate with cab seats.

The galley is equipped with a stainless steel sink and drain. The five-gallon water supply tank has an electric pump and a convenient outside fill faucet. There's a two-burner LPG stove with a stainless steel top and painted vent hood, as well as an ice box and

BLAZER CHALET BY NIGHT.



spice rack. Blazer Chalet comes with a five-gallon LPG tank.

Blazer Chalet is smartly appointed throughout. All camper windows have tinted glass and all windows and the cab opening have either color-keyed curtains or drapes. The floor and overhead area are covered with indoor-outdoor carpeting, while the walls are covered with padded vinyl. A snap-on padded vinyl cover is provided for the cab-camper joint.

Blazer Chalet has two roomy storage compartments, one equipped with a hanging wardrobe.

Package A. This package includes all items in the Base Package with the addition of a 5000 BTU LPG heater.

Package B. All items in the Base Package and Package A are included in Package B with the exception of the ice box. In Package B, a 3-way refrigerator takes the place of the ice box.

The refrigerator can be run with LPG, battery or AC-DC hook-up. Included with the refrigerator is an electrical power hook-up package (with battery) and an AC power hook-up kit with AC-DC converter.

Package C. This package includes everything offered in the Base Package and Packages A and B plus two overhead bunks, so that Blazer Chalet can sleep four.

PAY FOR ALL THIS BLAZER VALUE.

The new Chevy Blazer Chalet comes with a standard chalet package including: power steering, L78-15D (R) blackwall tires, front auxiliary bucket seat, Deluxe chromed front and rear bumpers, front-mounted spare tire carrier are all standard on this Blazer. Power is all V8 with a 350 4-barrel standard and a 400 4-barrel available.

You can specify one of two available 4-wheel-drive systems. Chev-

rolet's conventional system is included with the standard three-speed or available four-speed manual transmissions. Full-time 4-wheel drive is included with available Turbo Hydra-matic transmission. This is a system you control from *inside the cab*. To move from paved to unpaved surfaces, or vice versa, all you do is turn the steering wheel. You don't have to get out and lock or unlock front hubs.

Blazer also delivers a comfortable ride with no sacrifice in off-road capability. That's because a soft-riding Special Suspension is now standard on all 4-wheel-drive Blazers.



SPECIFICATIONS

SERIES	Blazer Chalet 4-Wheel Drive		
GVW Rating (lb)	6500		
Availability	Standard		Available
Engine, V8	350-4		400-4
Clutch Dia. (in)	12		*
Front Suspension	Type	Hypoid Driving Axle—Leaf Spring	
	Capacity (lb)	3600	
	Spring Capacity (lb)	1650 ea	1900 ea
	Shock Absorbers	1" dia.	1.38" dia.
	Stabilizer Bar	1.25" dia.	
Rear Suspension	Axle Type	Semi-Floating	
	Capacity (lb)	4000	
	Ratios	3.07	3.73
	Springs—Type	Two-Stage Multi-Leaf	
	Spring Capacity (lb)	2000	
	Shock Absorbers	1" dia.	1.38" dia.
Brakes	Front/Rear	Power Disc/Drum	
Electrical	Battery (watts)	3200	3500*, 4000
	Generator (amp)	37	42, 61
Fuel Tank	Nominal Cap (gal)	25	30
Steering	Type	Power	
Transmission	Manual	3-speed	4-speed
	Automatic		Turbo Hydra-matic
Transfer Case		NP205—2 spd.	†NP203 (Full Time)
Tire Size, Tubeless	L78-15D		

*400-4 V8 engine requires automatic transmission. *Auxiliary Battery included with Packages B and C.

†Full-time transfer case available only with Turbo Hydra-matic transmission.

BLAZER CHALET DIMENSIONS (inches)

Overall Length*	218.1	Interior Head Room	Top Down	59.0
Camper Length	127.7		Top Up	79.5
Overall Width	79.6	Wheelbase		106.5
Camper Width	76.0	Overhang	Front	46.4
Overall Height	92.5		Rear	65.2
Camper Height	65.4	Tread	Front	66.7
			Rear	63.7
		Ground Clearance		7.0

*Overall Length includes tire carrier with tire and rear step.

ALL ILLUSTRATIONS AND SPECIFICATIONS CONTAINED IN THIS LITERATURE ARE BASED ON THE LATEST PRODUCT INFORMATION AVAILABLE AT THE TIME OF PUBLICATION APPROVAL. THE RIGHT IS RESERVED TO MAKE CHANGES AT ANY TIME IN PRICES, COLORS, MATERIALS, EQUIPMENT, SPECIFICATIONS AND MODELS, AND ALSO TO DISCONTINUE MODELS. CHEVROLET MOTOR DIVISION OF GENERAL MOTORS CORPORATION, DETROIT, MICHIGAN 48202. LITHO IN U.S.A.